

Centro Display - "POD" - Assembly-Instructions

Centro (Modular Exhibition Display) = POD

Description:

Combination, Flexible, Innovative, Multifunctional, Display Product
Designed to be utilised in a "Variety of Combinations" including 'fully closed' dual aspect viewing

Shelves uniquely shaped 8mm thick 'Green Edge' Acrylic Shelves (Glass-Like-Finish)
Shelves supported on Chrome Adjustable Shelf Brackets will each accept 12kg of evenly distributed product



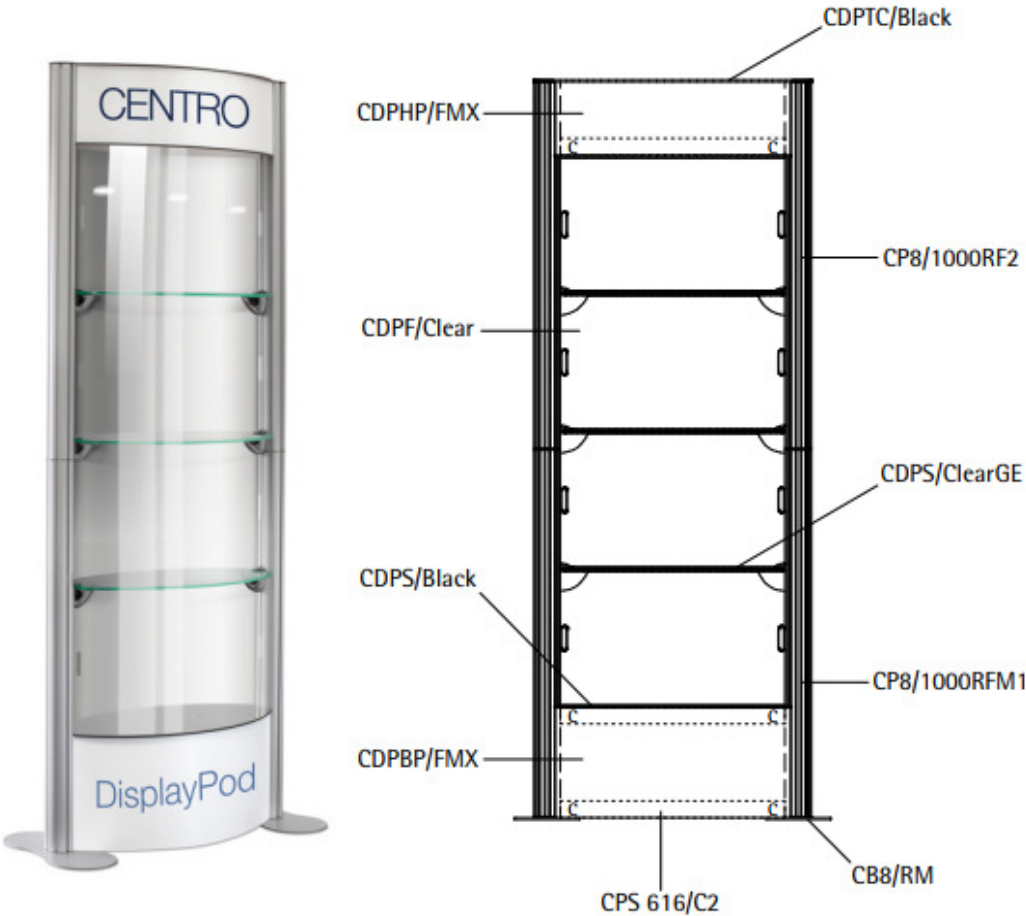
Variety 1 = Display with Open Shelves (No rear Graphics)
Variety 2 = Display with Open Shelves (Rear Graphics only)
Variety 3 = Display with NO Shelves (Advert Graphics only)

Weight:
Shelves Designed to Support 12kg
(Evenly Distributed Product)

Centro Display - "POD" - Assembly-Instructions

Centro (Modular Exhibition Display) = POD

Components:



Parts	Parts
Code	Description
CPS/1000	4x 1000mm Posts
CDPS/ClearGE	3x Laser Cut Shelves
CB8/RM	2x Base Plates
CDPTC/Black	1x Top Black Cover
CDPS/Black	1x Bottom Black Cover
CDPBP/FMX	2x Base Panels
CDPHP/FMX	2x Header Panels
CDPF/Clear	8x Infill Fascia's
CPS616/C2	3x Straight Profile's

Graphics: 3mm Rigid Panels

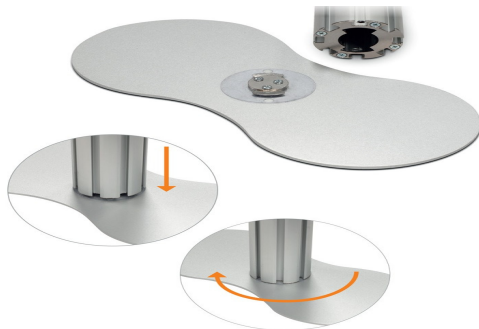
Parts	Parts
Code	Description
Header Panels	W715mm x H200mm (Finished Print / Cut Size) W700mm x H200mm (Visible Area)
Base Panels	W715mm x H300mm (Finished Print / Cut Size) W700mm x H300mm (Visible Area)

Centro Display - "POD" - Assembly-Instructions

Centro (Modular Exhibition Display) = POD

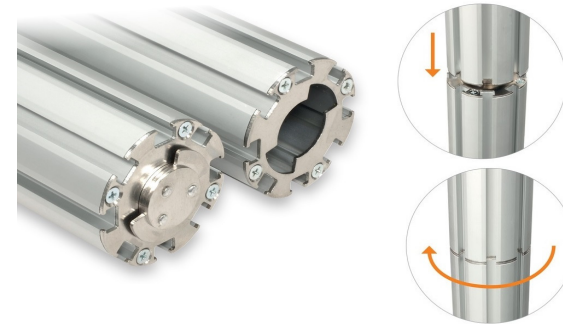
Step 1 - Base and Post (Lower)

1. Place "Base Plates" onto the floor
2. Push down 1x Post onto the base plate connector
3. Twist clockwise to lock into place



Step 2 - Post (Higher)

1. Affix Upper Post to Lower Posts
2. Push down Upper Post into Lower Post
3. Twist clockwise to lock into place



Step 3 - Brackets for Shelves

1. Ensure all shelf brackets are aligned
2. Connection is down the post groove
2. Connection is locked into place - as shown image



Step 4 - Crossbar

1. Slot Clamps into the post channels
2. Slide crossbar onto the clamps
3. Secure and tighten the screws with hex key



Centro Display - "POD" - Assembly-Instructions

Centro (Modular Exhibition Display) = POD

Step 5 - Black Shelves

1. Pre-assemble the 2x black shelves
2. Connect to the crossbar with 4x screws
3. Warning - do not over tighten!



Step 6 - Black Shelf (Bottom)

1. Introduce the black shelf - Image 1
2. Repeat for other channel
2. Secure the shelf - Image 2 + Image 3



Step 7 - Black Shelf (Top)

1. Repeat step 6 for the top shelf



Step 8 - Position Top Cover

1. Position top cover onto the posts
2. Secure with 4x countersunk screws
3. Warning - do not over tighten!



Centro Display - "POD" - Assembly-Instructions

Centro (Modular Exhibition Display) = POD

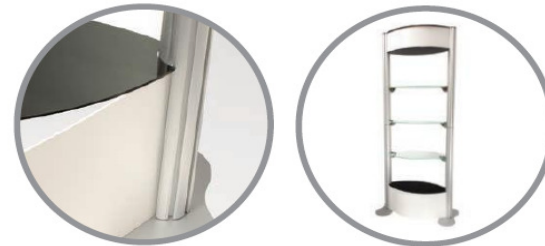
Step 9 - Shelf Brackets

1. Ensure Shelf brackets are in the open position
2. Slide Shelf between the jaws
3. Tighten the screws + Repeat for other shelves



Step 10 - Foamex Board

1. Insert one end of the Foamex base panel into the angled channel of post
2. Arc panel so opposite end inserted into other post channel, following arc of black shelf
3. Repeat process for other panel



Step 11 - Infill Panels

1. Repeat step 10 for the infill panels
2. Inserted between each shelf front and back
3. Unless they are only utilised on one-side only



Step 12 - Display POD - Completed

